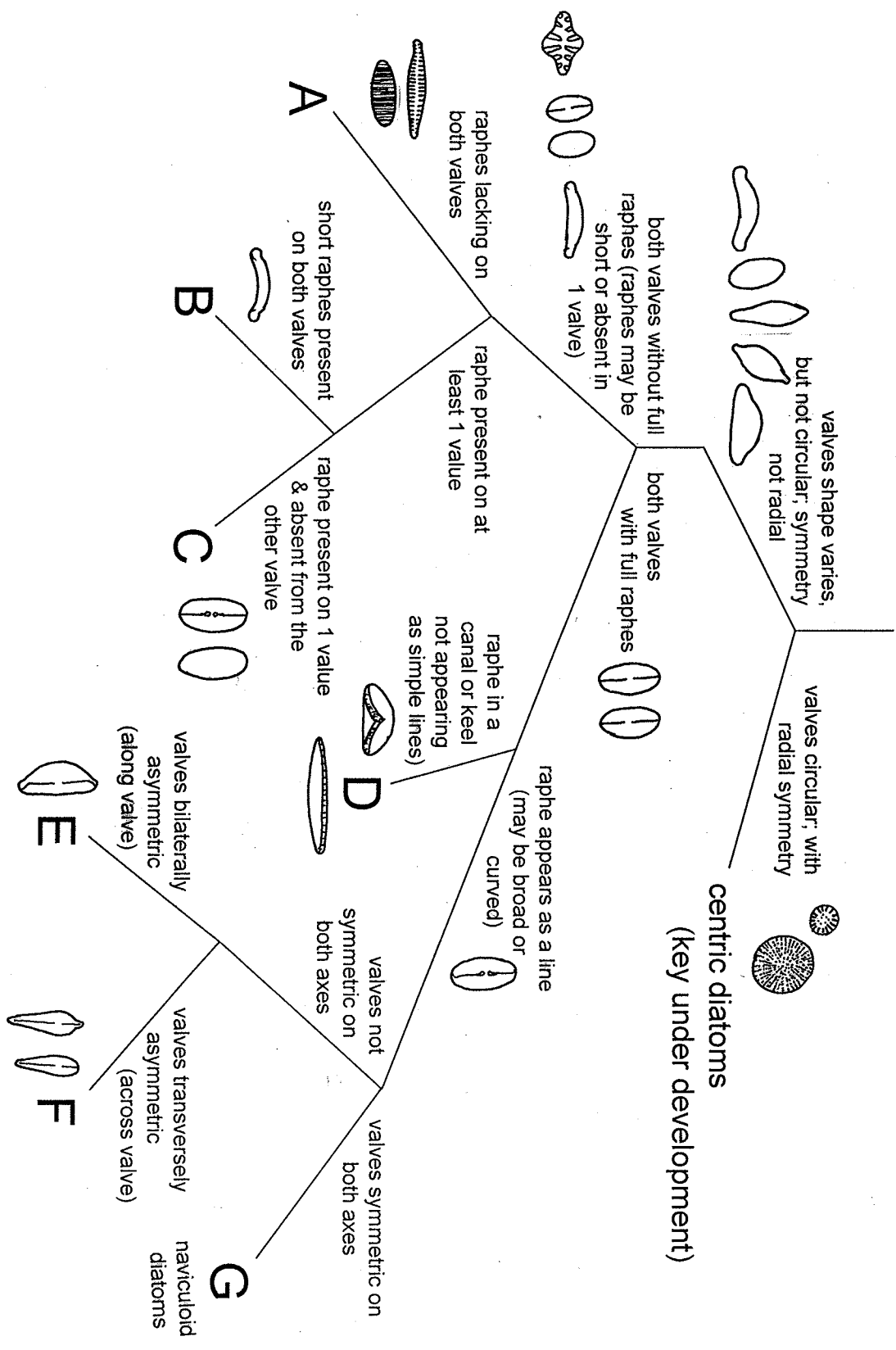


Key to diatom sub-keys



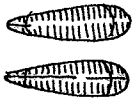
Key C

one valve with full raphe, one valve with no or reduced raphe

one valve without raphe

one valve with short raphe

distal raphe ends curve in opposite direction



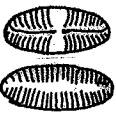
Rhoicosphenia
(note septa at valve ends)

raphe strongly deflected

Eucoconeis



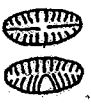
Lemnicola



raphe curved only at end

distal raphe ends otherwise

cup-like feature present



Planothidium

lacks cup-like feature

shape otherwise

rapheless valve with central area to one side



Achnanthes

narrow, elongate, with slightly bulbous ends

central area in center

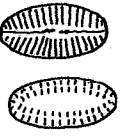
pattern on the two valves very different

various shapes (not broadly oval), curvature otherwise

Cocconeis



Karayevia



Rossithidium



Platessa



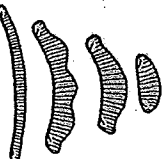
Psammothidium



Semiorbis



Eunotia



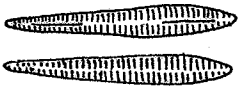
Key B

values transversely asymmetric

values transversely symmetric

raphes on value face

Peronia



Actinella



raphes at value ends

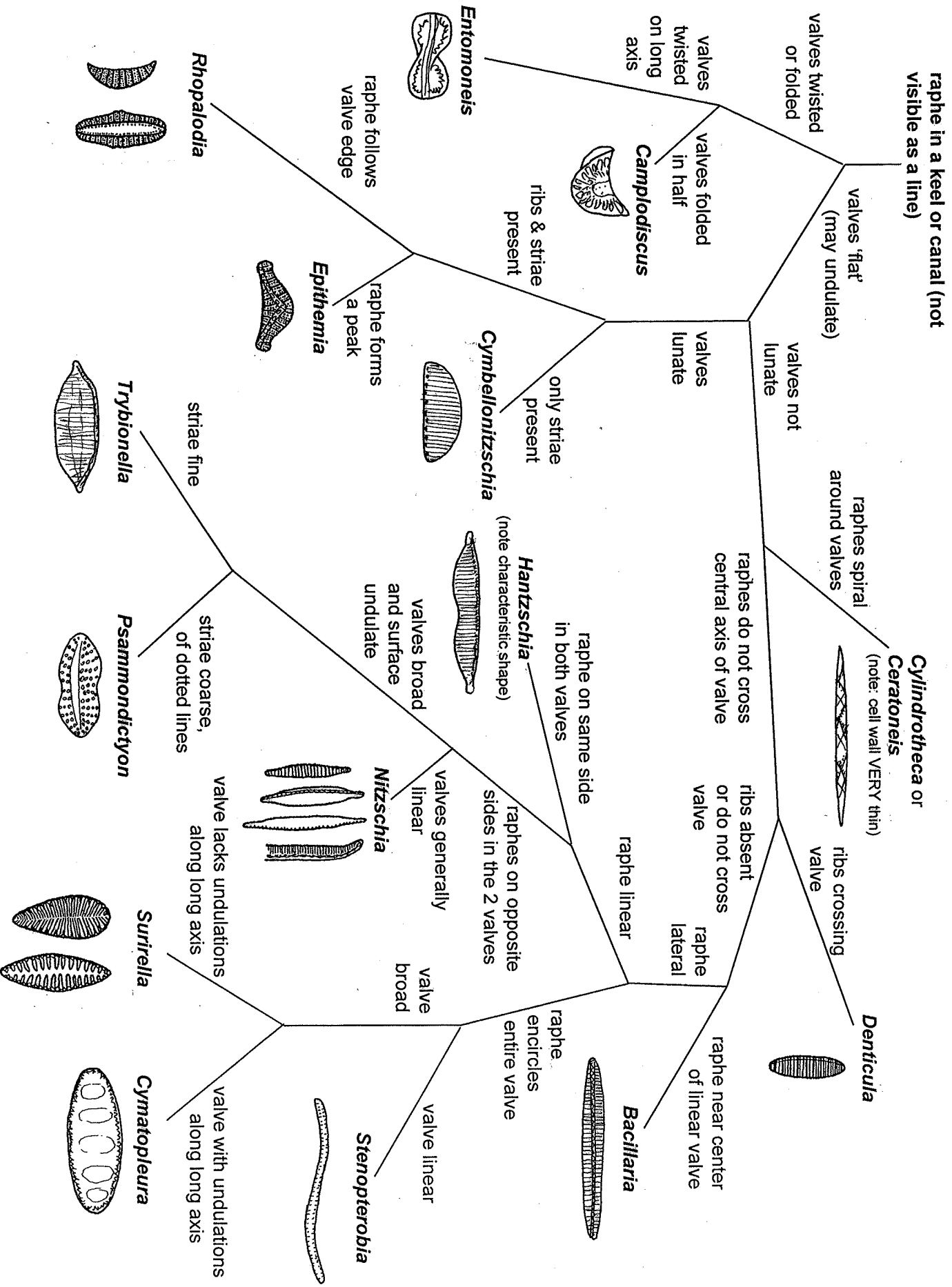
both dorsal & ventral sides undulate

Amphicampa



ventral side NOT undulate (dorsal may be) gently arched (or straight)

Key D



Key E

valves not bilaterally symmetrical lower margin with central bump that lacks striae

valves side-by-side (if separated, only 1 valve present)

valves side-by-side (if separated, only 1 valve present)



Reimeria

valves transversely asymmetric (generally club-shaped)

septa present, one valve with short raphe

Rhoicosphenia



lack septa (or rarely present); raphes long

large & robust, large capitate ends, 2 or more stigmas on 1 side

Didymosphenia



striae marginal; may appear broken; club-shaped; no stigma

Gomphosphenia



raphe twisted near center; ventral striae shortened

Delicata



dorsal and ventral sides inflated; striae narrow & dense

Cymbopleura



far ends of raphe go up; stigma (if present) ventral

striae strongly radiate around central area

Navicymbula
(*Seminavis*, *Navicella*)



Cymbella



not with this combination

lower margin without such bump raphe not twisted

dorsal striae of dashes that line up in longitudinal rows; dorsal hyaline central area may be present

Ampfiora



Halampfiora

far ends of raphe go down; stigma (if present) dorsal

striae not strongly radiate in center

Encyonema

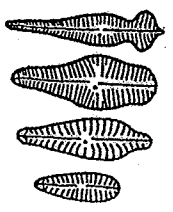


Encyonopsis



longitudinal line lacking; note exceptions under

Gomphonema



longitudinal change in striae 'color' (seen as a line) or no line but illustrated below

Gomphoneis

